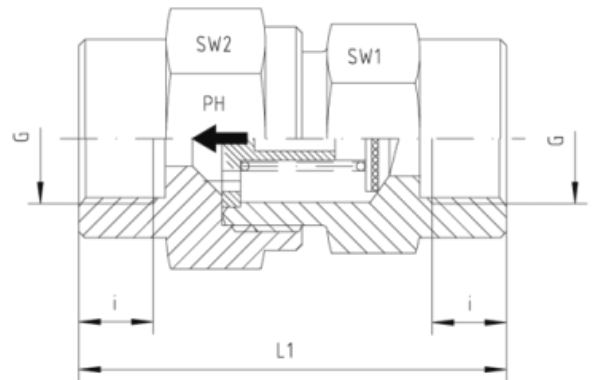
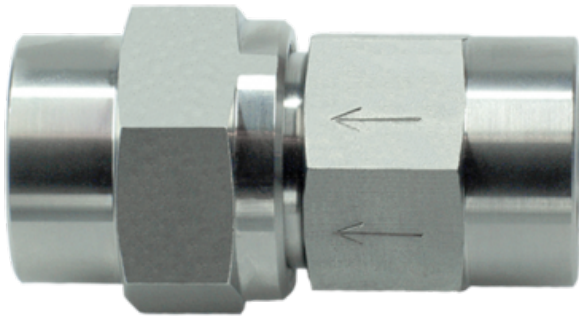


## Rubrik 8.244

### Non-Return Valves - Inside Thread



Both Sides Inside Thread

BSP - Parallel

NPT-Thread

Pressure	Thread	Approx. Dimensions				SW2	Or
		L1	i	SW1	PB		
	<b>G</b>						
<b>Series BSP</b>							
400	G 1/8" BSP	42,5	8,0	17	17		RD
400	G 1/4" BSP	54,0	12,0	19	19		RD
400	G 3/8" BSP	60,0	12,0	24	27		RD
400	G 1/2" BSP	71,0	15,0	32	36		RD
400	G 3/4" BSP	84,0	16,5	41	46		RD
400	G 1" BSP	94,5	19,0	46	50		RD
250	G 1 1/4" BSP	110,0	21,5	55	60		RD
250	G 1 1/2" BSP	114,5	22,0	65	70		RD
250	G 2" BSP	120,0	26,0	75	75	nur 0,5 bar Öffnungsdruck / only 0,5 bar valve lift pressure	RD
<b>Series NPT</b>							
400	1/8" NPT	42,5	11,6	17	17		RD
400	1/4" NPT	57,5	16,4	19	19		RD
400	3/8" NPT	63,5	17,4	24	27		RD
400	1/2" NPT	78,0	22,6	32	36		RD

400	3/4" NPT	84,5	23,1	41	46		RD
400	1" NPT	101,0	27,8	46	50		RD
250	1 1/4" NPT	110,0	28,3	55	60		RD
250	1 1/2" NPT	117,5	28,3	65	70		RD
250	2" NPT	120,0		75	75	nur 0,5 bar Öffnungsdruck / only 0,5 bar valve lift pressure	RD