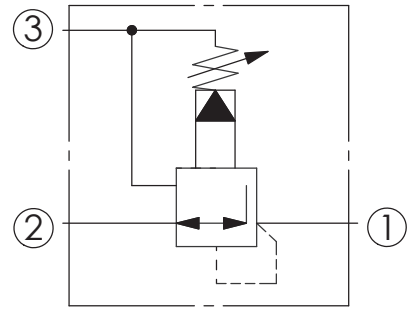
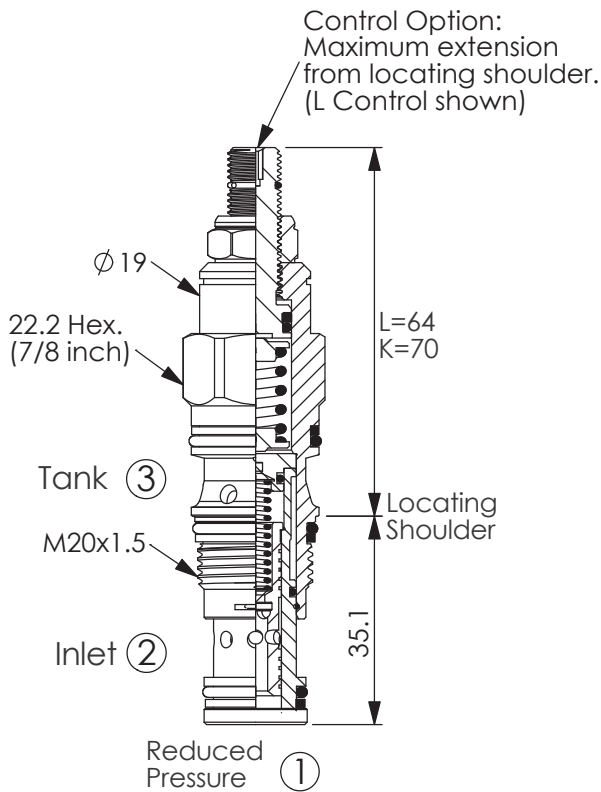


REDUCING/RELIEVING VALVE

(Pilot Operated Reducing/Relieving)

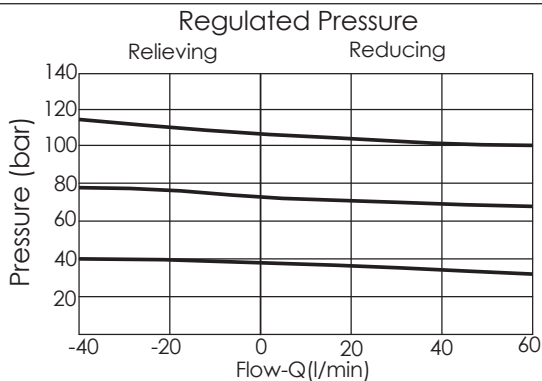
Ordering Code: **PP-11A-X-Y-Z**



TECHNICAL DATA

Max. Operating pressure:	350	bar
Rated flow:	40	l/min
Cavity-Tooling:	11A-3	
Installation torque:	40-50	Nm
Weight:	0.15 (Z:L,LP) 0.16 (Z:KF)	kg
Control Pilot Flow (0.11-0.16 L/min.)		

UNIT:mm



X OPERATION

30	Standard Type Low Leakage
33	Option Type Improved Dynamic Response
35	Impact Resistant Type (Without Filter)

Z OPTIONS

L	Leakproof hex. socket screw.	
K	Handknob with Lock Knob.	
KF	Handknob with Panel Mount.	
LP	Leakproof hex. socket screw. With stainless steel external metal components	

Y SPRINGS

ADJUSTMENT RANGES

A	7-210 bar (14 bar Standard Setting) Maximum Differential=210 bar
B	3.5-105 bar (14 bar Standard Setting) Maximum Differential=210 bar
D	1.7-55 bar (14 bar Standard Setting) Maximum Differential=140 bar
E	1.7-28 bar (14 bar Standard Setting) Maximum Differential=140 bar
N	4-55 bar (14 bar Standard Setting) Maximum Differential=140 bar
Q	4-28 bar (14 bar Standard Setting) Maximum Differential=140 bar
W	10.5-315 bar (14 bar Standard Setting) 350 bar inlet pressure