



### FEATURES

Full Automatic Precision Control  
 Economical Affordable Crimper  
 Energy Saving and Safety Operation  
 CE Approved

### OPTIONS

Backstop Device  
 110V/220V 1 Phase  
 230V/440V/480V 3 Phase

# S51

### TECHNICAL DATA

Max Hydraulic Hose	2"4SP
Crimping Range (mm)	4-95
Die Type	51
Master Die Length (mm)	80
Max Opening (mm) <sup>1)</sup>	+24
Motor Power (KW/HP) <sup>1)</sup>	3.0/4.0(400V 3 Phase)
Crimping Force (KN)	1900
Crimpings Per Hour	800
Foot pedal	Included
Noise Level (dBA)	65
Protection Class	IP56

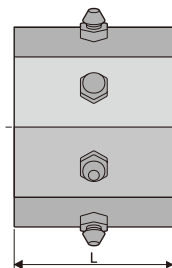
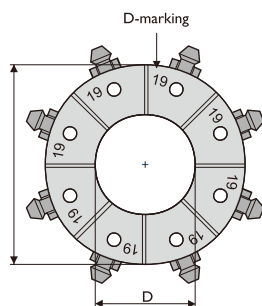
### DIMENSIONS (LxWxH)

Machine (mm)	650x450x750
Machine (inch)	25.6x17.7x29.5
Packaged (mm)	750x550x900
Packaged (inch)	29.5x21.7x35.4

### WEIGHT

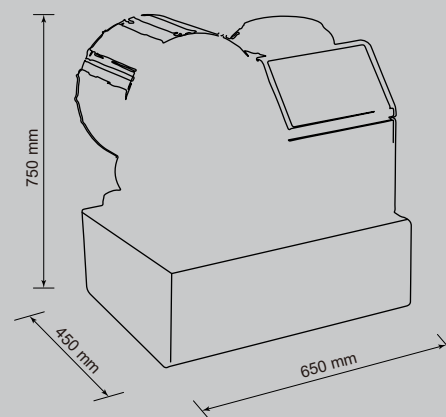
Machine (kg/lbs)	300/661
Packaged (kg/lbs)	320/705

\* ACCORDING TO THE FITTING.



### CONTROL

Advanced Programmable Chip



### DIE SET 51-SERIES

DieSetNo	D (mm)	L (mm)	Crimp. range (mm)
*18506/10	10	60	10.0-12.0
*18506/12	12	60	12.0-14.0
18506/14	14	60	14.0-16.0
18506/16	16	60	16.0-19.0
18506/19	19	60	19.0-22.0
18506/22	22	75	22.0-26.0
18506/26	26	75	26.0-30.0
18506/30	30	75	30.0-34.0
18506/34	34	80	34.0-39.0
18506/39	39	80	39.0-45.0
18506/45	45	90	45.0-51.0
18506/51	51	90	51.0-57.0
18506/57	57	100	57.0-63.0
18506/63	63	100	63.0-69.0
18506/69	69	100	69.0-74.0
*18506/74	74	110	74.0-78.0
*18506/78	78	110	78.0-82.0

\* Optional die sets at additional cost

1) Maximum opening is the total die travel. Add this value to the minimum crimping diameter of the die set used. The result is the maximum opening of the machine with die set in place.

Products images & Specifications may alter prior official notice at any time.